

# TECHNICAL INFORMATION SHEET – NUMBER 362

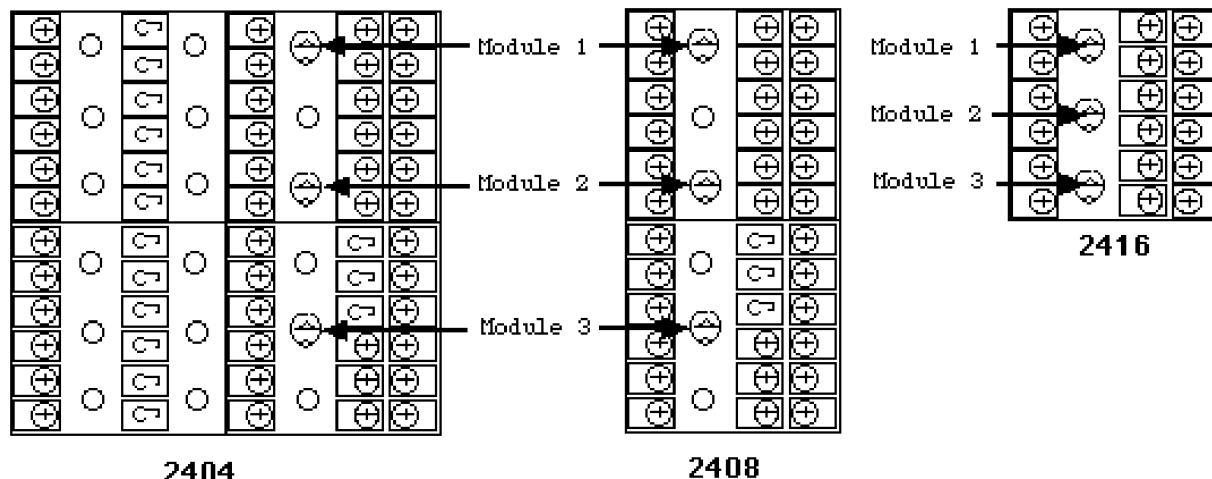
## MODEL 2400 SAFETY KEYING FOR UNISOLATED OUTPUT MODULES

11/24/98



ISSUED BY THE APPLICATIONS ENGINEERING DEPARTMENT

In order to comply with the European directives for safety, an output module-keying scheme has been added to the 2400 models to prevent Logic and DC output boards from being plugged into slots that require Relay or Triac boards. A yellow key has been added to the instrument sleeve, accessible from the back of the instrument.



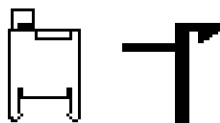
*Note: Early release of the keying scheme utilized 18 yellow plugs in the 2404 models and 6 yellow plugs in the 2408 models. Only the plugs indicated in the sketches above are functional.*



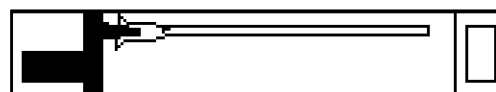
ARROW UP = SET FOR ISOLATED OTUPUTS (GRAY OUTPUT MODULES) To configure the instrument sleeve for an **isolated output**, use a small screwdriver to turn the indicator arrow to lock in the 12:00 o'clock position.



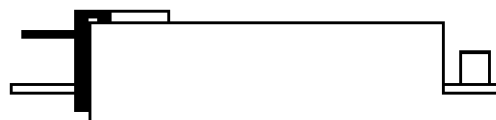
ARROW DOWN = SET FOR UNISOLATED OTUPUTS (RED OUTPUT MODULES) To configure the instrument sleeve for an **unisolated output**, use a small screwdriver to turn the indicator arrow to lock in the 6:00 o'clock position.



Unisolated output module key (red)



Unisolated output module (red case) with key installed



*Note: The red keys will not fit on earlier versions of output module boards. The PCB must be slotted near the module case to accept the key.*